



长沙航空职业技术学院  
Changsha Aeronautical Vocational and Technical College

---

# 2017届毕业生就业质量年度报告

---

2013 25

2017

18548

49

2017

---

	.....	<b>1</b>
	.....	<b>3</b>
1.1	.....	3
1.1.1	.....	3
1.1.2	.....	4
1.2	.....	5
1.2.1	.....	5
1.2.2	.....	8
1.2.3	.....	11
1.3	.....	11
1.3.1	.....	11
1.3.2	.....	13
1.3.3	.....	15
1.3.4	.....	16
1.4	.....	17
1.5	.....	18
	.....	<b>20</b>
2.1	.....	20
2.1.1	.....	20
2.1.2	.....	20
2.1.3	.....	21
2.2	.....	21
2.2.1	.....	21
2.2.2	.....	21
2.2.3	.....	22

---

2.2.4	.....	22
2.2.5	.....	22
2.2.6	.....	23
2.3	.....	23
2.3.1	.....	23
2.3.2	.....	24
2.4	.....	24
2.4.1	.....	24
2.4.2	.....	25
	.....	<b>26</b>
3.1	.....	26
3.1.1	.....	26
3.1.2	.....	26
3.2	.....	27
3.3	.....	29
3.4	.....	30
3.4.1	.....	30
3.4.2	.....	30
	.....	<b>32</b>
4.1	.....	32
4.2	.....	32
4.2.1	.....	32
4.2.2	.....	33
4.2.3	.....	34
4.3	.....	34
4.4	.....	35
4.4.1	.....	35

---

4.4.2	.....	35
4.4.3	.....	35
	.....	<b>37</b>
5.1	.....	37
5.1.1	.....	37
5.1.2	.....	38
5.1.3	.....	39
5.2	.....	40
5.2.1	.....	40
5.2.2	.....	40
5.2.3	.....	41
5.3	.....	41
5.3.1	.....	41
5.3.2	.....	42



1973 1998 3

4.5 1.5 800 29 63 7 2 23 2 3 5 1 2 1 4 7 1 2 7 9000 40000 393 184 205 30 175 14 4 1 3

1

9

16

2

1





**1.1.2**

2017	5	28		
				600
20.00%		100	11	
233	7.81%		200	3
	233		225	
204				

**1 2017**

<b>1</b>		233	7.81%
		225	7.54%
		102	3.42%
		87	2.92%
		38	1.27%
		<b>685</b>	<b>22.96%</b>
<b>2</b>		204	6.84%
		192	6.44%
		139	4.66%
		74	2.48%
		42	1.41%
		<b>651</b>	<b>21.82%</b>
<b>3</b>		188	6.30%
		166	5.56%
		83	2.78%
		51	1.71%
		49	1.64%
		42	1.41%
		24	0.80%
		16	0.54%
		<b>619</b>	<b>20.75%</b>
<b>4</b>		183	6.13%
		93	3.12%
		90	3.02%
		88	2.95%
		72	2.41%

			68	2.28%
			<b>594</b>	<b>19.91%</b>
5			155	5.20%
			141	4.73%
			88	2.95%
			50	1.68%
			<b>434</b>	<b>14.55%</b>
			<b>2983</b>	<b>100.00%</b>

0.01%

## 1.2

=

÷ ×100%

### 1.2.1

#### 1.2.1.1

2017 9 1 2017 96.25%  
94.33%

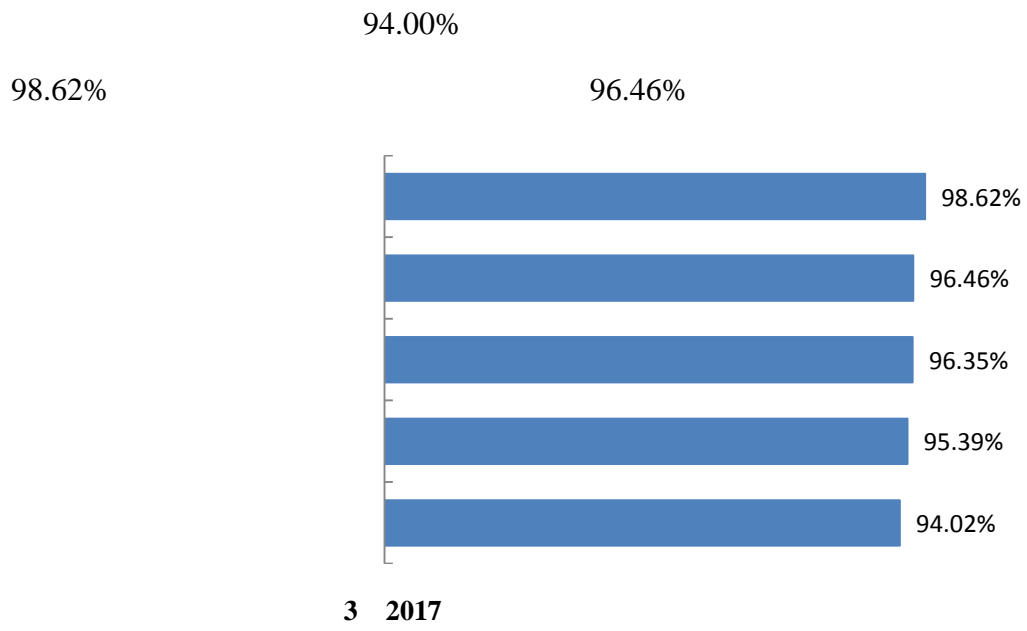
#### 2 2017

	2814	94.33%	96.25%
	50	1.68%	
	4	0.13%	
	3	0.10%	
	112	3.75%	

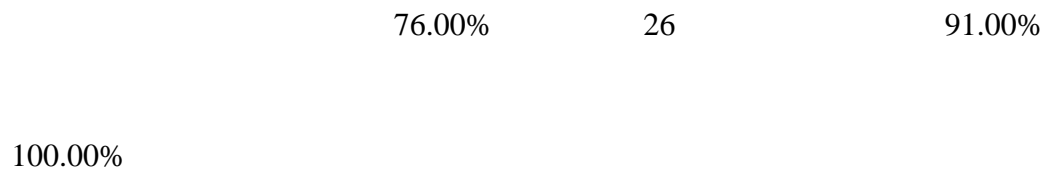
1. = + + + + )÷ ×100%

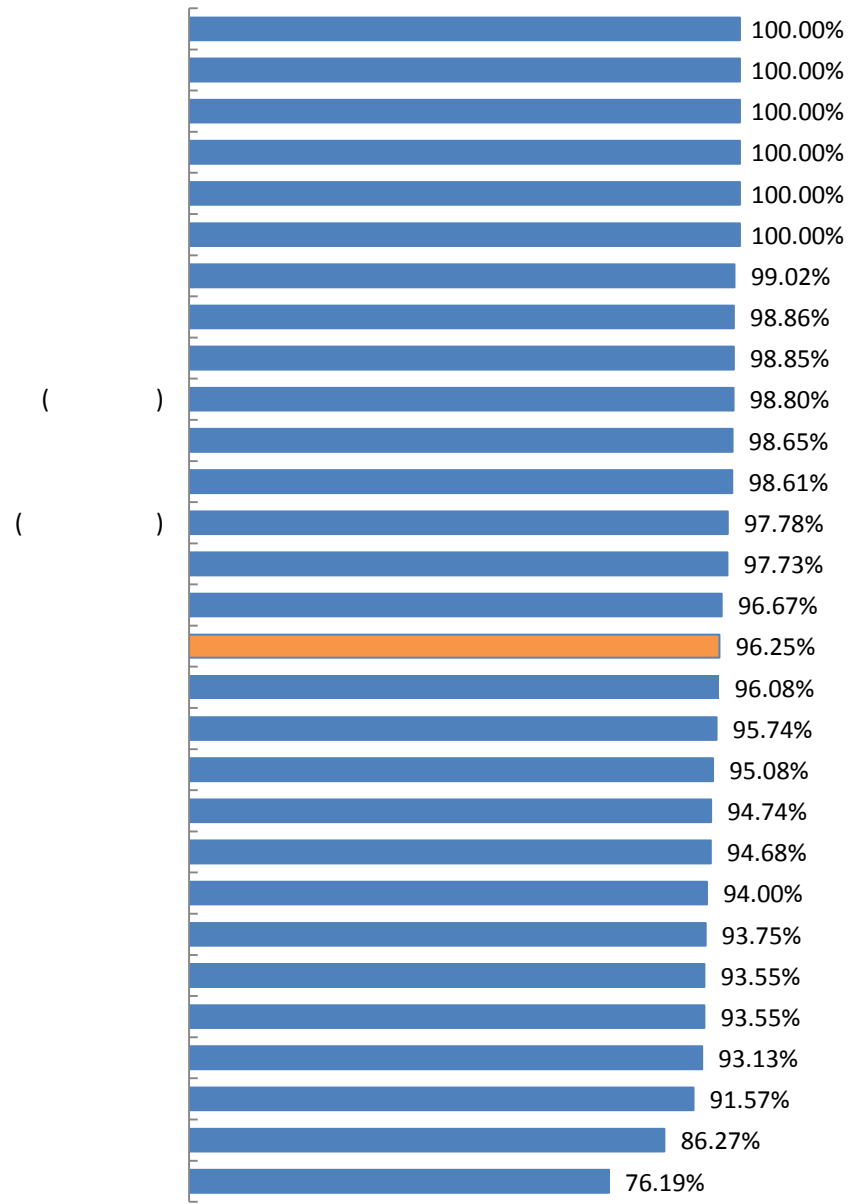
2. 0.01%

**1.2.1.2**



**1.2.1.3**

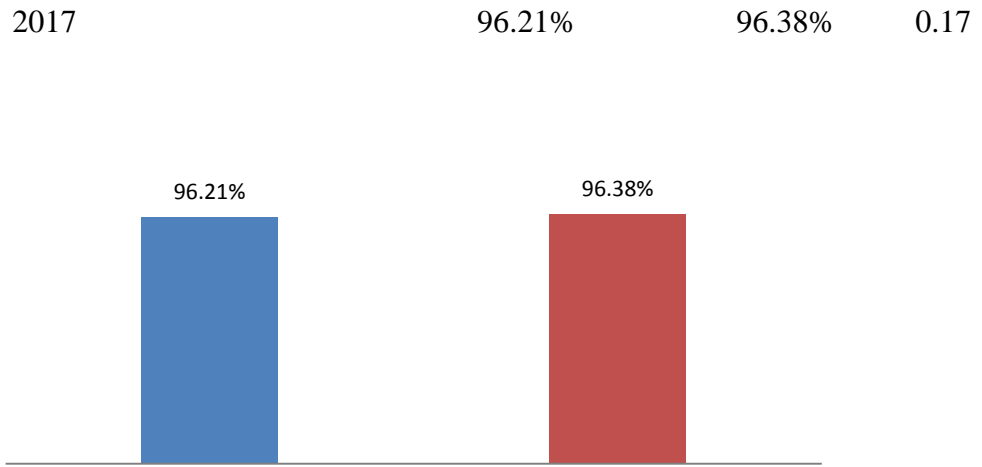




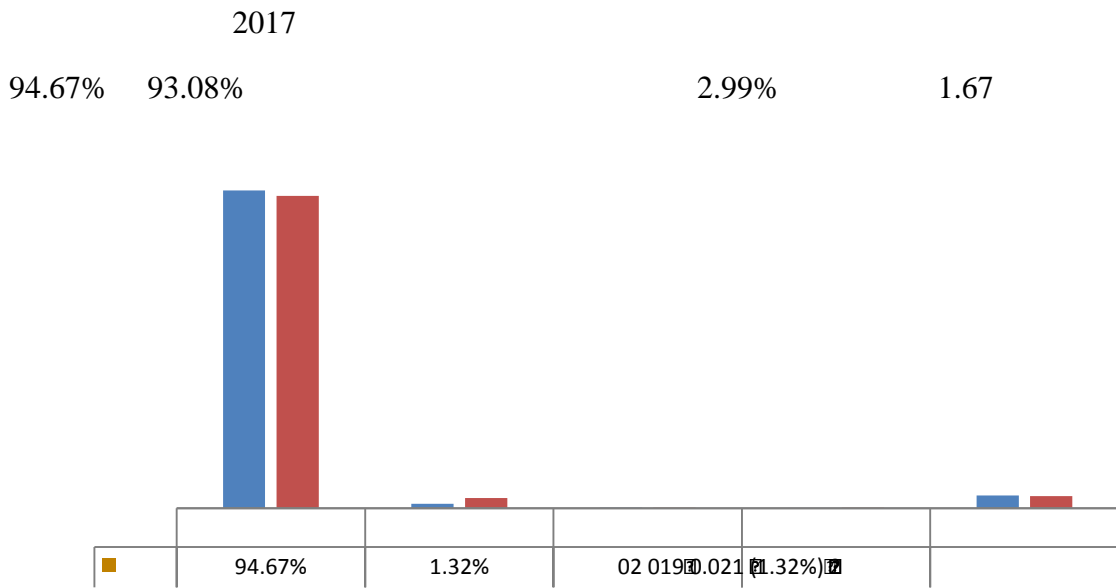
4 2017

## 1.2.2

### 1.2.2.1

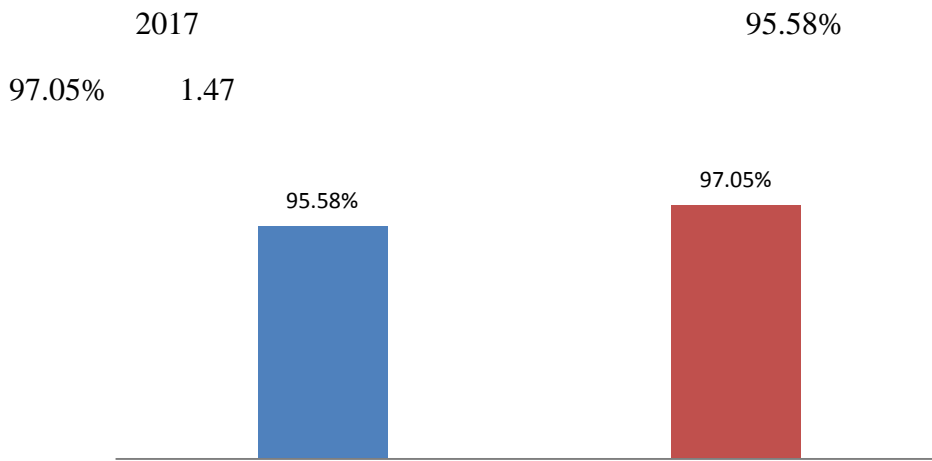


5 2017

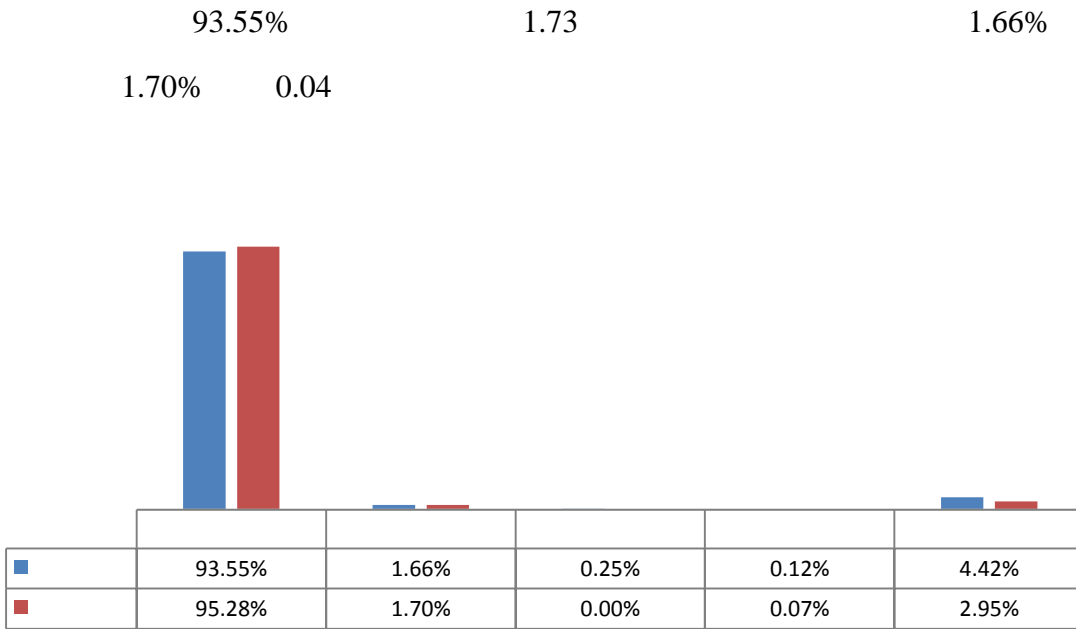


6 2017

**1.2.2.2**

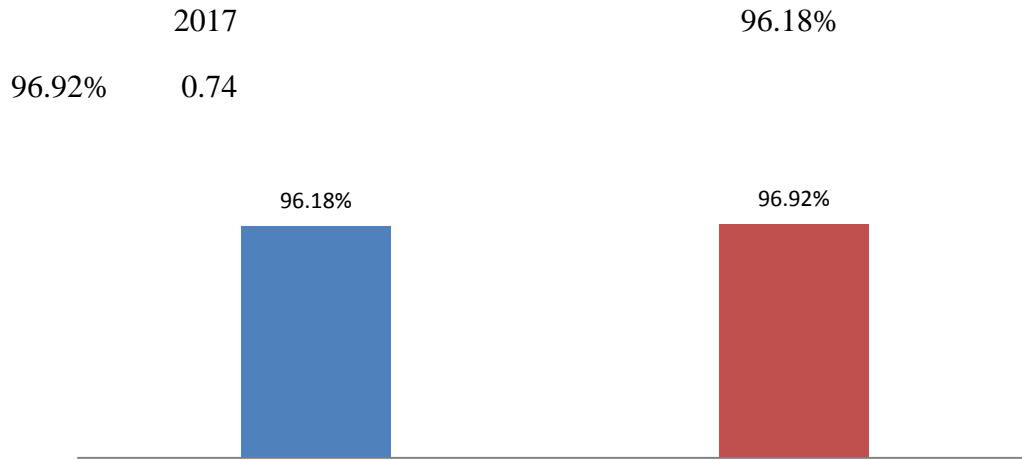


**7 2017**

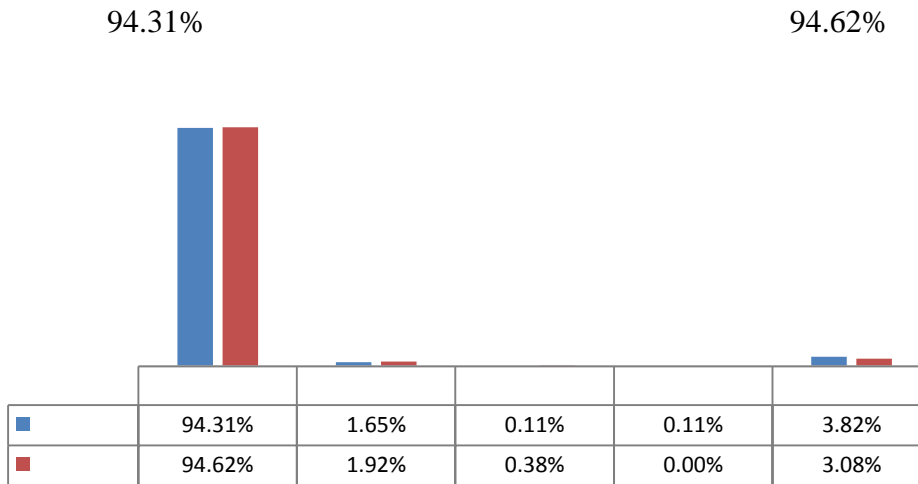


**8 2017**

**1.2.2.3**



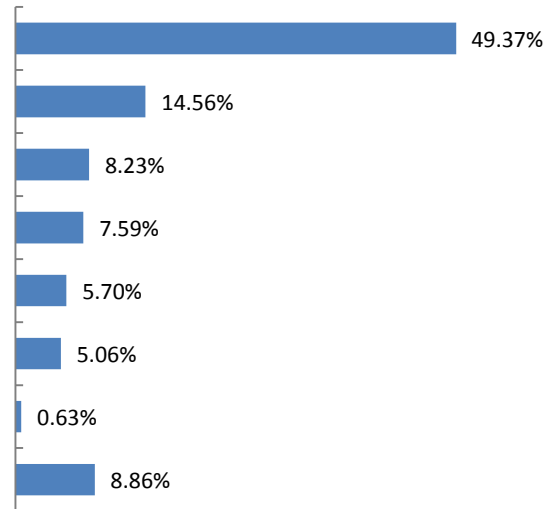
**9 2017**



**10 2017**

### 1.2.3

2017 112 3.75%  
49.37%  
14.56%



11 2017

-2017

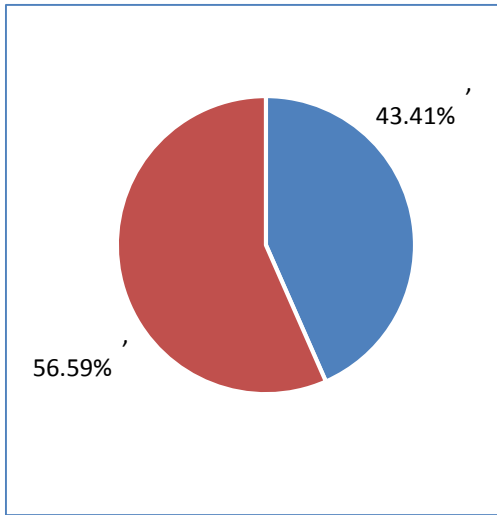
### 1.3 1

#### 1.3.1

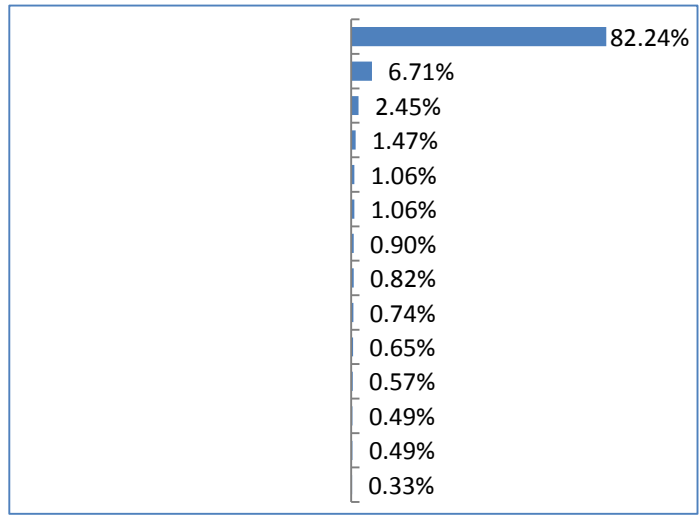
##### 1.3.1.1

2017 43.41%  
82.24% 56.59% 15.77%

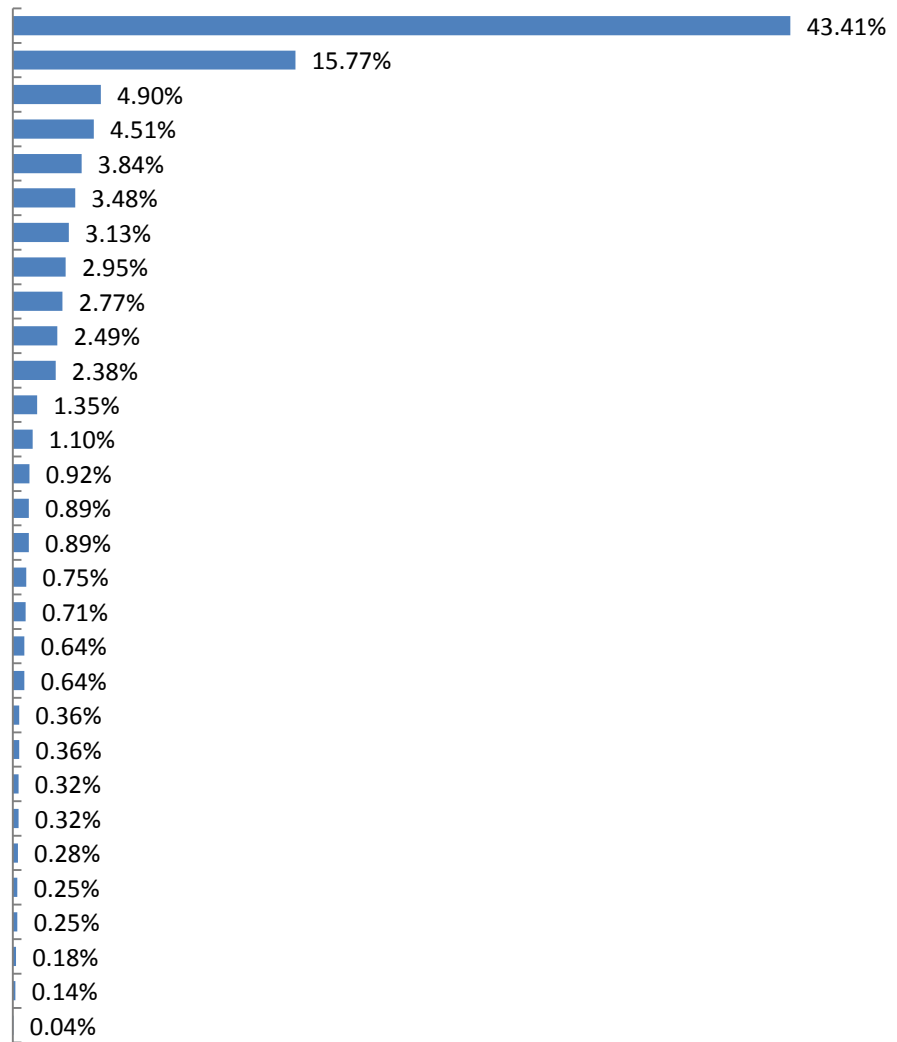




12 2017

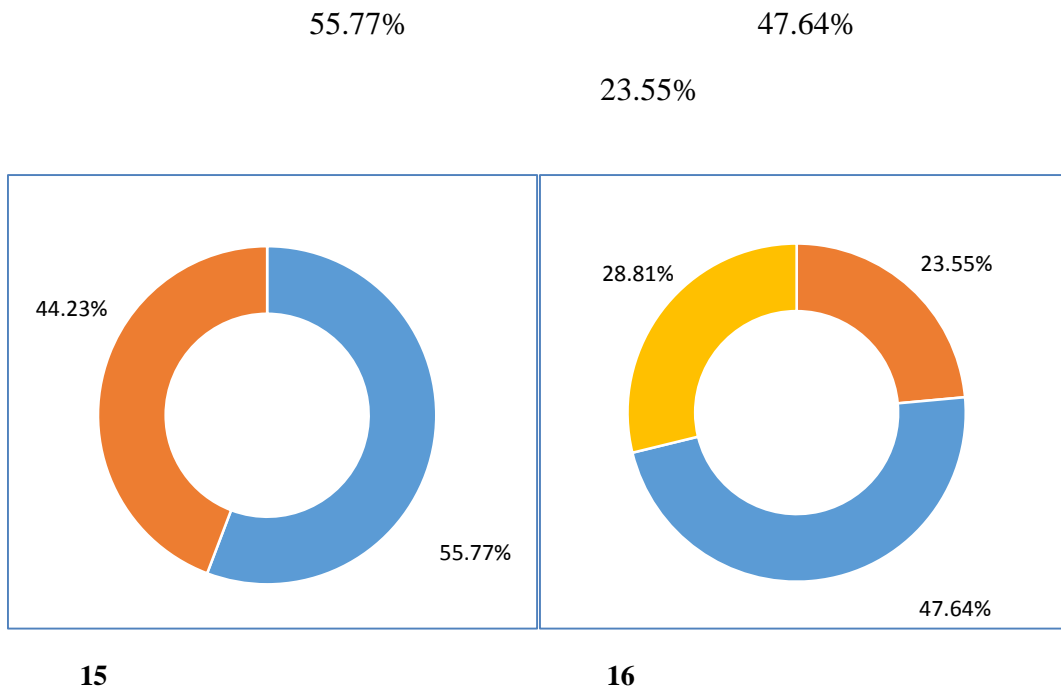


13 2017



14 2017

**1.3.1.2**

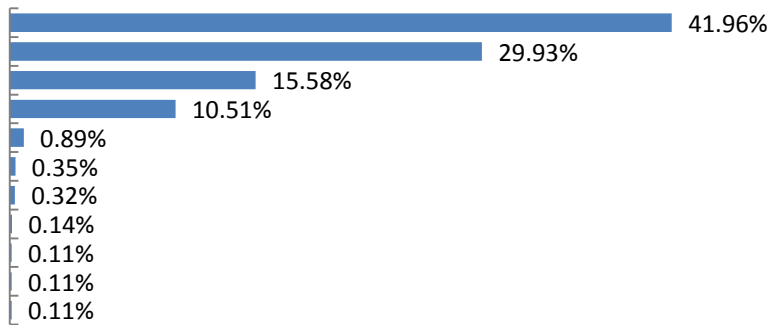


**1.3.2**

**1.3.2.1**

2017

41.96%                      29.93%                      15.58%

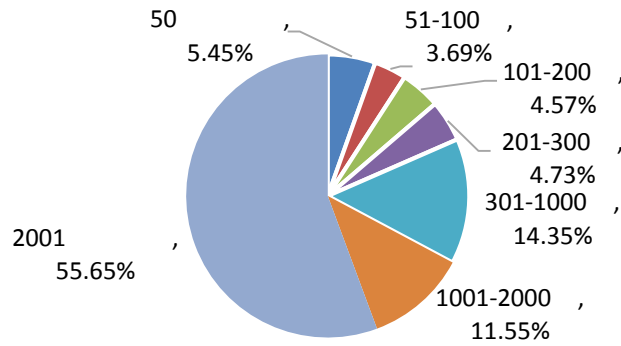


**17 2017**

- 1.
- 2.

**1.3.2.2**

2017 55.65% 301-1000 14.35% 1001-2000 11.55% 2001



**18 2017**

-2017

**1.3.2.3**

2017

**3 2017**

3 2017			
	166		17
	138		17
	83		17
	61		16
	59	6908	15
	58	0	15
	54		15
	52		14
	46		14
	45		14
	44		14
	44	0	14

	41		14
	39		14
	34		13
	31		12
	29		12
	27		12
	27		11
	26		11
	24		11
	23		11
	22		11
	22		11
	21		11
	20		11
	20		11
	19		10
	19		10
	18		10
	17		10
	17	-	-

1. 10

2.

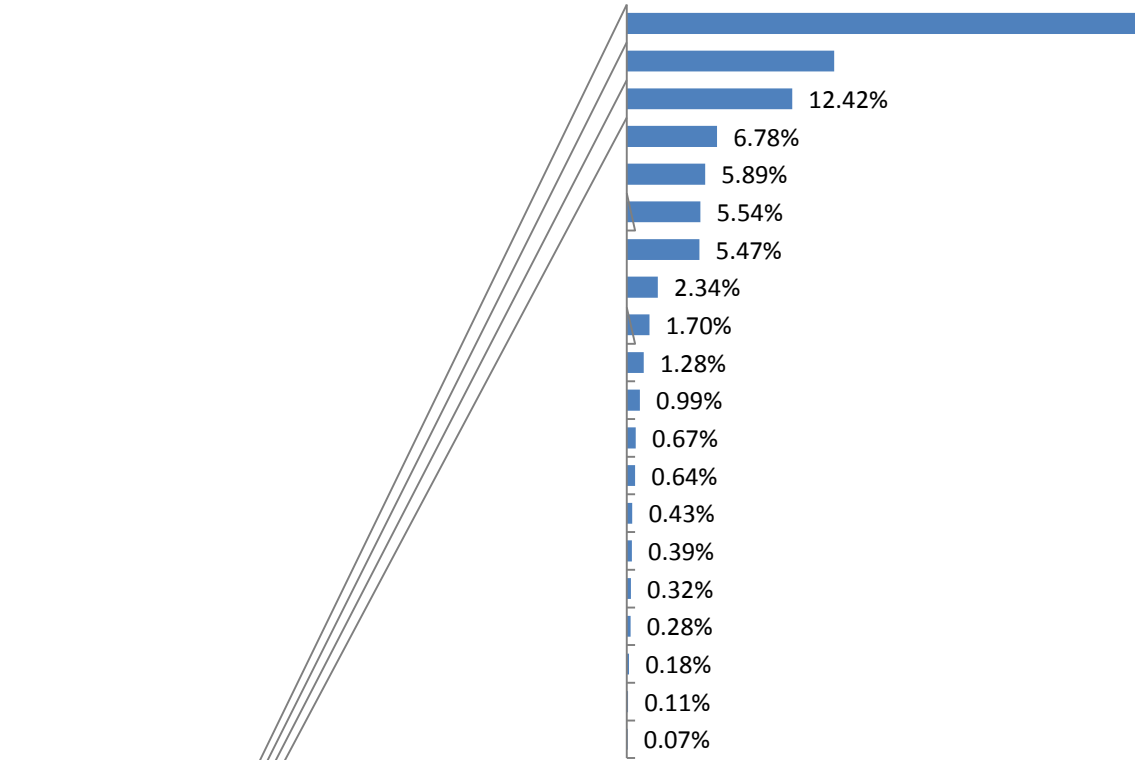
### 1.3.3

2017

38.91%

15.58%

12.42%



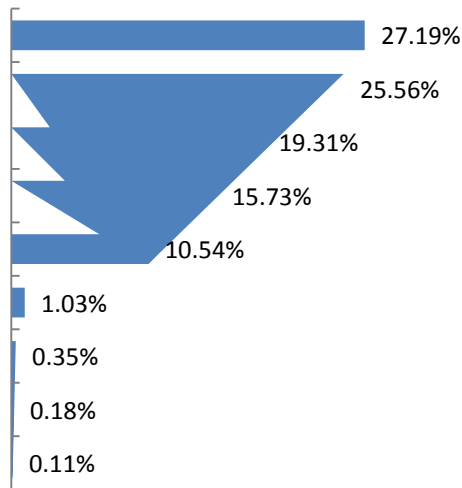
19 2017

1.3.4

2017

27.19%

25.56%



20 2017

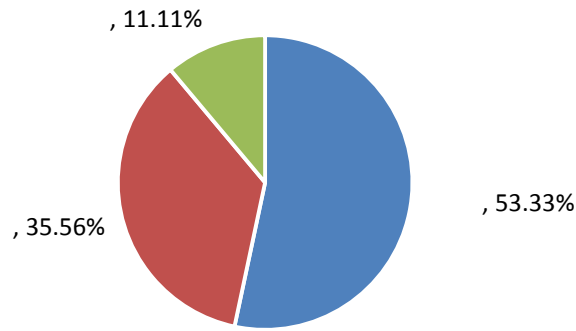
### 1.4

2017

50

1.68%

88.89%



**21 2017**

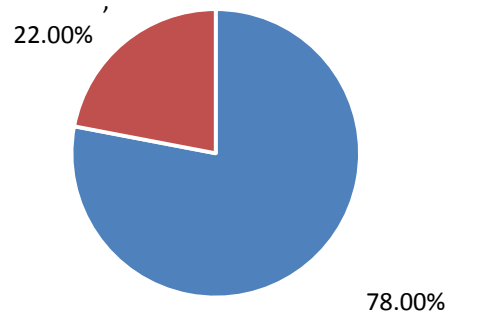
-2017

39

78.00%

11

22.00%



**22 2017**

1.5

2

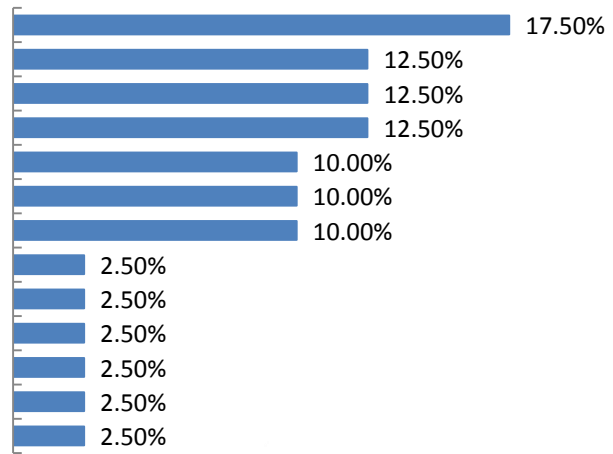
2017

40

2017

17.50%

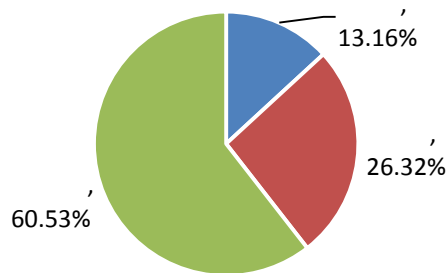
12.50%



23 2017

-2017

39.47%

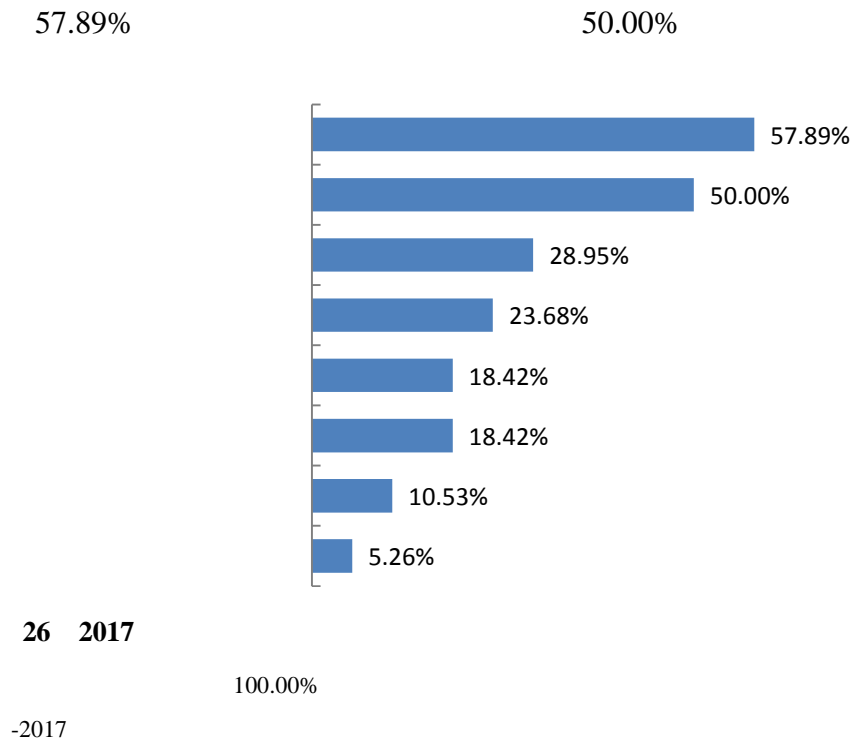
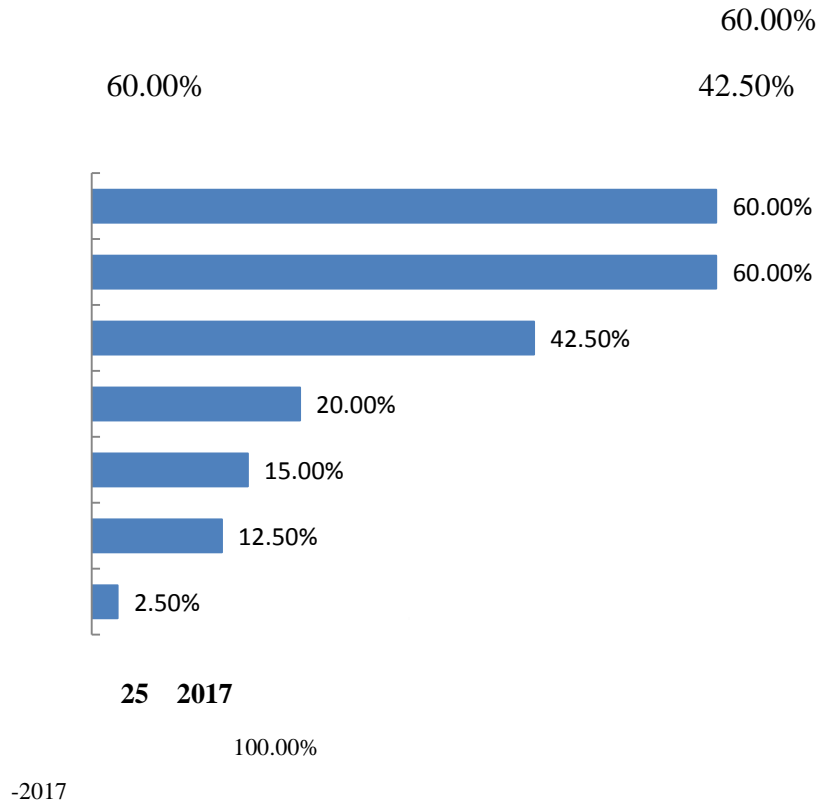


24 2017

-2017

2

2017







## 2.1

### 2.1.1

12

1:260

### 2.1.2

2014 4

2015

2015

28 2017

2017-2019

### 2.1.3

2300

1500

( )

100

2017

50

20

160

32

2017

262

## 2.2

### 2.2.1

2013 10

103

### 2.2.2

83

38

82

3631

400

205

3.5

51

194

5

3652

61

6380

5

1985

3

47

AOPA

40

331

5701

### 2.2.3

2008

70

3

15

32

2

### 2.2.4

7000

QQ

### 2.2.5

22

165

13

180

### 2.2.6

150

95%

80%

### 2.3

#### 2.3.1

SIYB

GYB

+

### 2.3.2

1500

## 2.4

### 2.4.1

2012

2015

2017

1

12

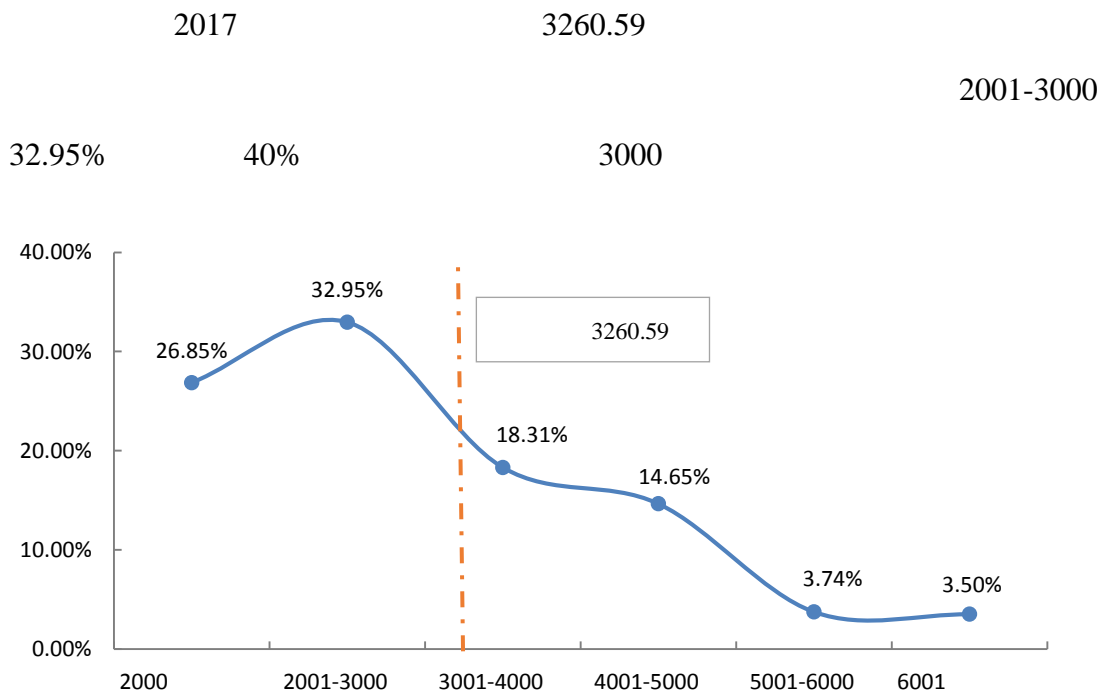
## 2.4.2

	2017	2015		
		2016	2018	2017
2017-2019				240
	30		300	



### 3.1

#### 3.1.1

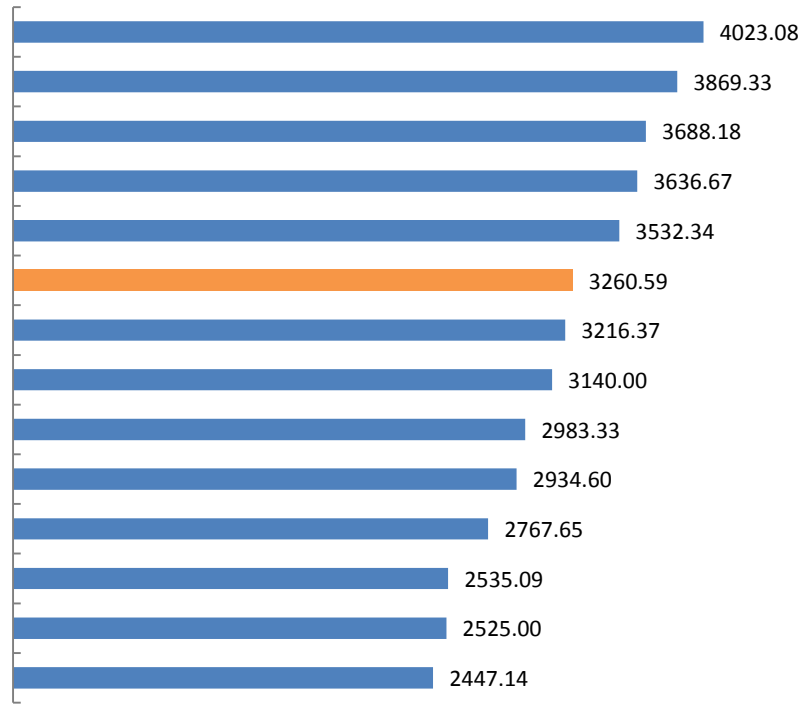


27 2017

-2017

#### 3.1.2

2017 4023.08 3869.33



28 2017

/

20  
-2017

3085.84

2934.60



29 2017

10  
-2017

### 3.2

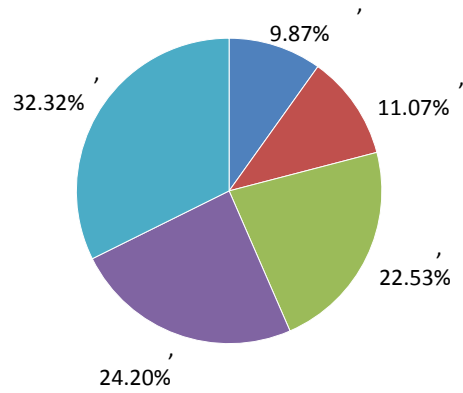
2017

79.06%

32.32%

24.20%





**30 2017**

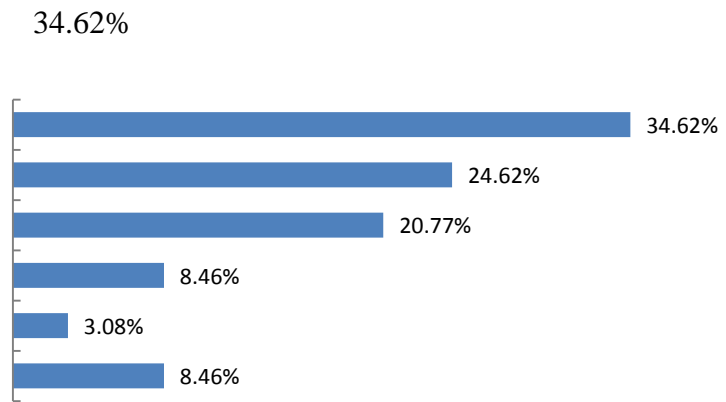
$$= + -2017 +$$

**4 2017**

	42.58%	36.13%	15.48%	3.23%	2.58%	94.19%
	38.04%	38.65%	14.72%	3.07%	5.52%	91.41%
	37.29%	28.81%	23.73%	0.00%	10.17%	89.83%
	18.46%	46.15%	20.00%	7.69%	7.69%	84.62%
	15.00%	35.00%	32.50%	7.50%	10.00%	82.50%
	39.73%	23.29%	19.18%	13.70%	4.11%	82.19%
	15.22%	39.13%	23.91%	5.43%	16.30%	78.26%
	13.64%	33.33%	30.30%	11.36%	11.36%	77.27%
	30.30%	19.70%	27.27%	15.15%	7.58%	77.27%
	17.65%	29.41%	29.41%	5.88%	17.65%	76.47%
	14.29%	39.68%	22.22%	12.70%	11.11%	76.19%
	13.33%	40.00%	16.67%	13.33%	16.67%	70.00%
	2.38%	26.19%	40.48%	16.67%	14.29%	69.05%
	2.27%	36.36%	29.55%	18.18%	13.64%	68.18%
	14.29%	28.57%	19.05%	19.05%	19.05%	61.90%
	25.93%	11.11%	22.22%	11.11%	29.63%	59.26%

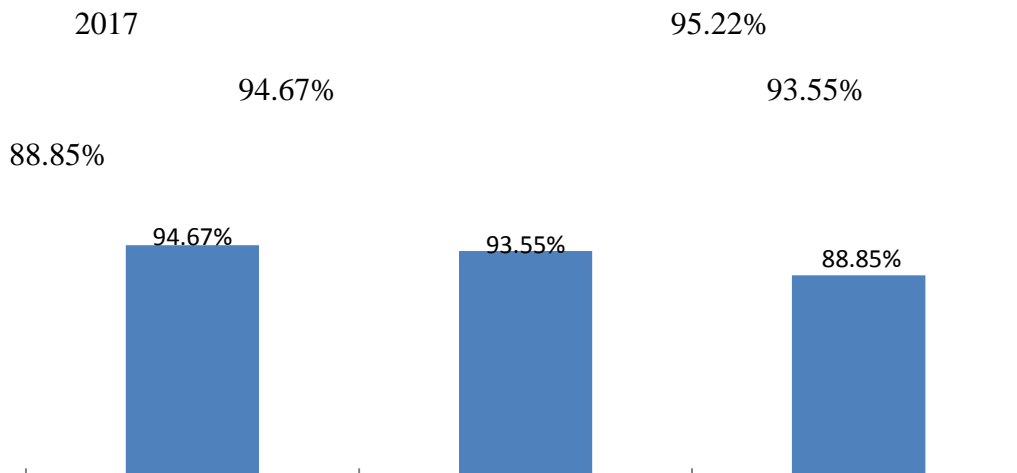
	12.50%	18.75%	21.88%	25.00%	21.88%	53.13%
	30.00%	15.00%	5.00%	20.00%	30.00%	50.00%
	9.09%	21.21%	15.15%	24.24%	30.30%	45.45%
	0.00%	27.27%	18.18%	36.36%	18.18%	45.45%

<10  
-2017



**31 2017**  
-2017

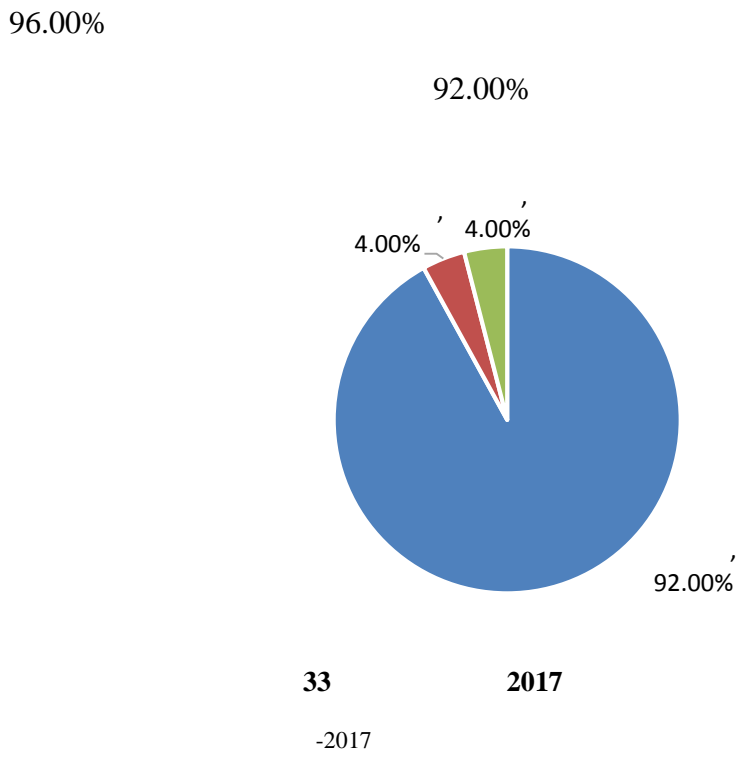
### 3.3



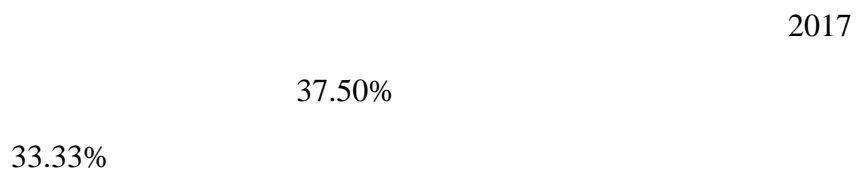
**32 2017**  
=  
+  
-2017

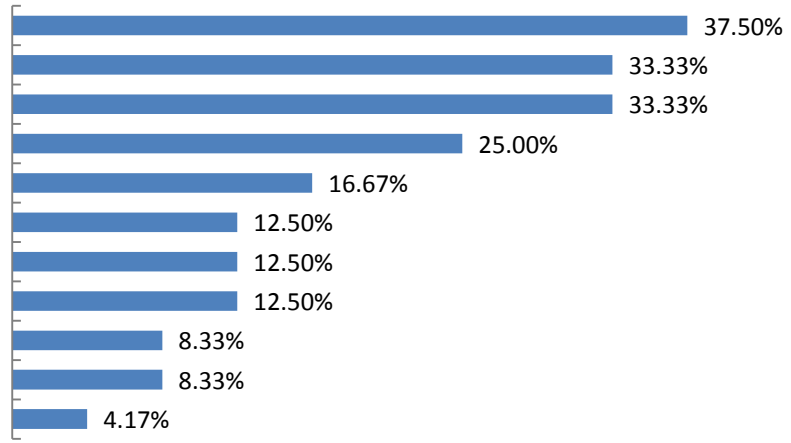
### 3.4

#### 3.4.1



#### 3.4.2





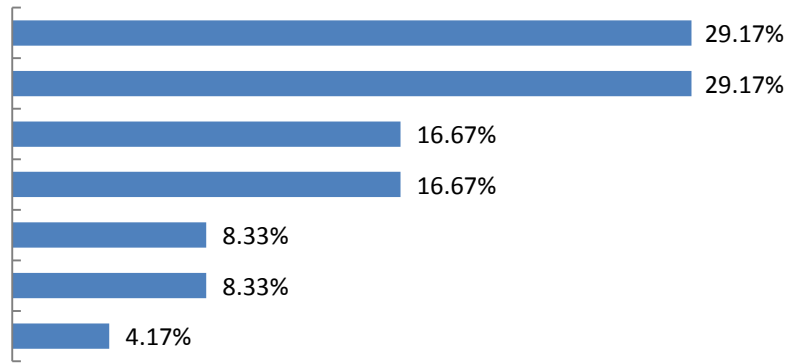
**34**                      **2017**

/

100%

-2017

29.17%



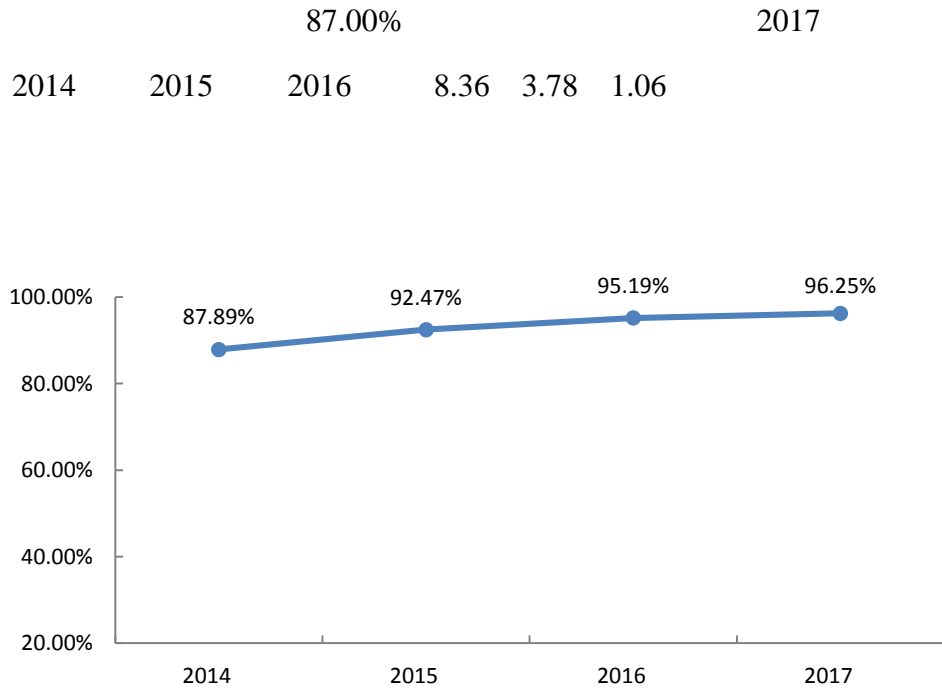
**35**                      **2017**

/

100%

-2017

## 4.1

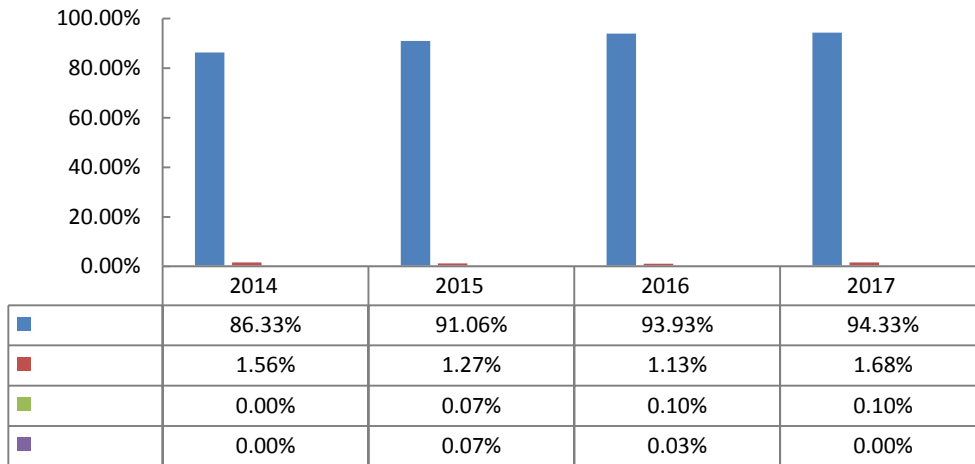


36 2014 -2017

## 4.2

### 4.2.1

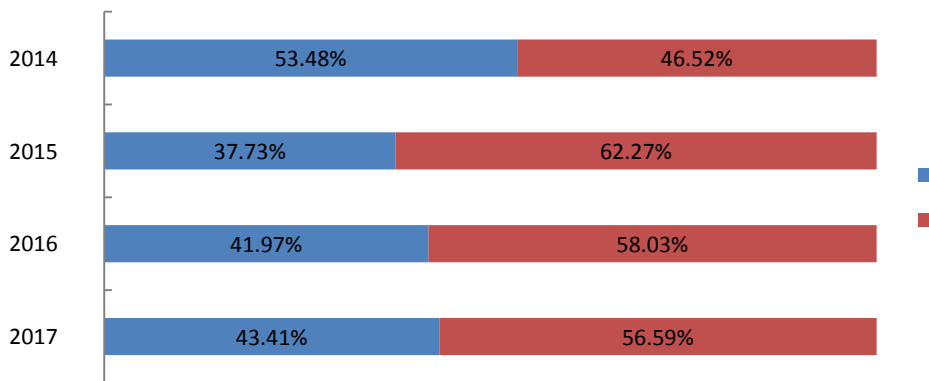




37 2014 -2017

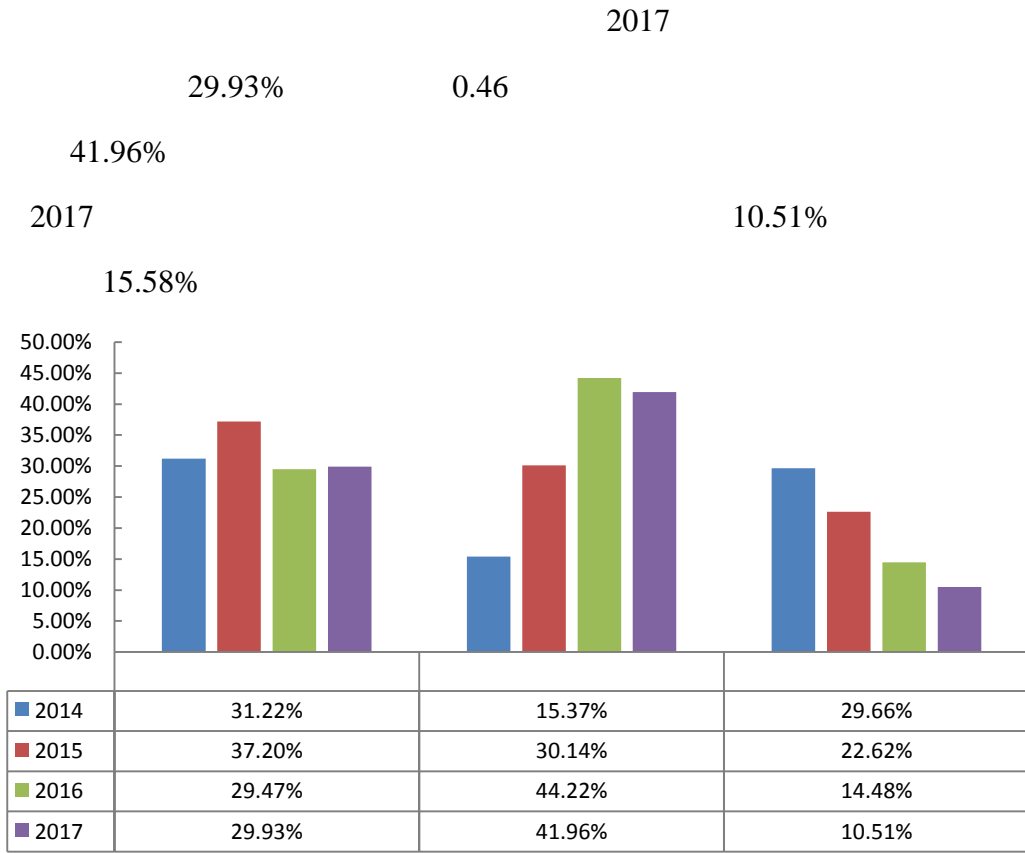
### 4.2.2

9 1 43.41%



38 2014 -2017

4.2.3

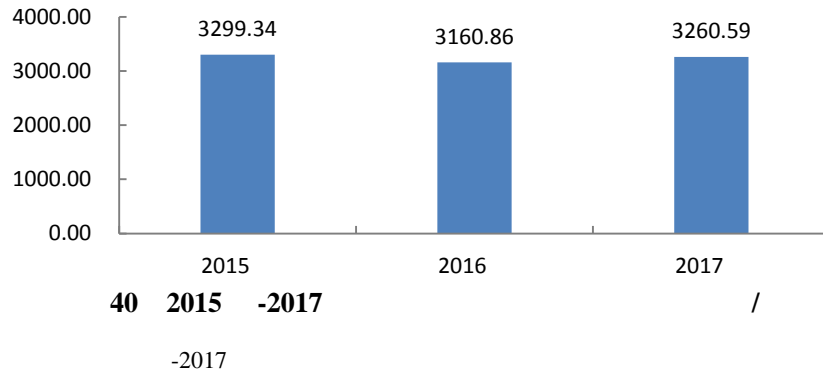


**39   2014   -2017**

4.3

2016                          2017

99.73                          3.16



#### 4.4

##### 4.4.1

##### 4.4.2

2025

##### 4.4.3

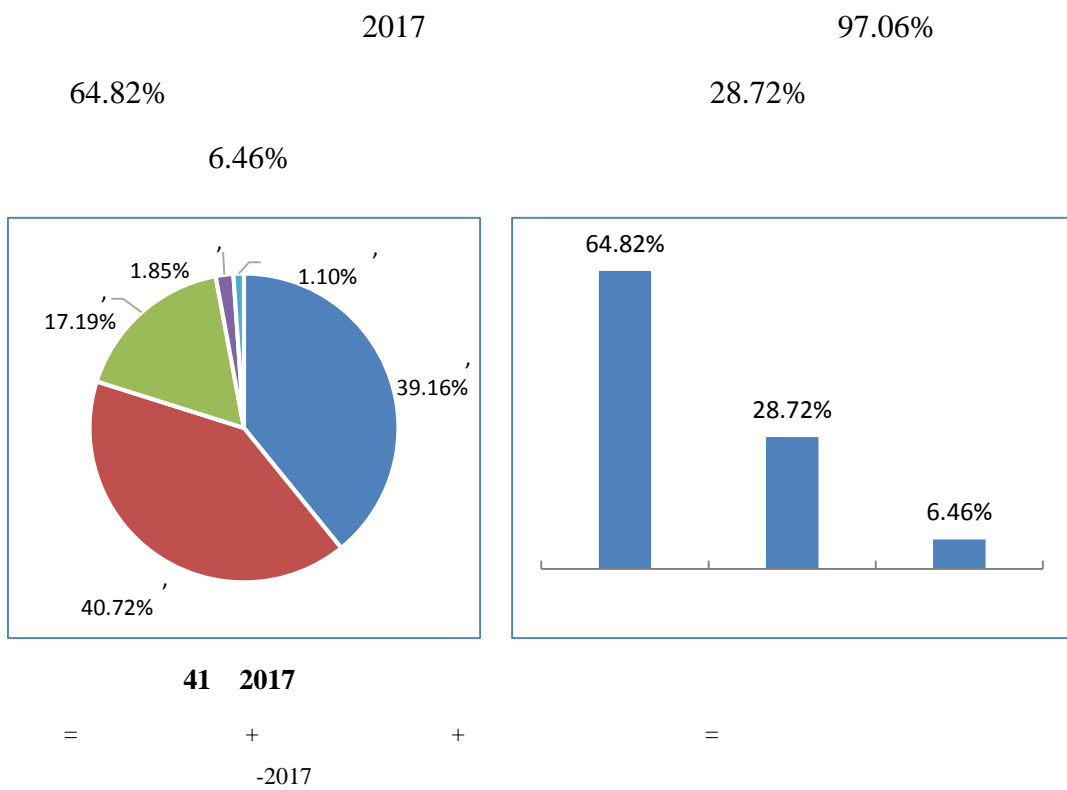






## 5.1

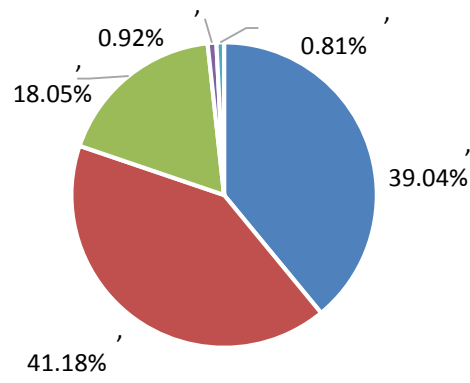
### 5.1.1



5.1.2

98.27%

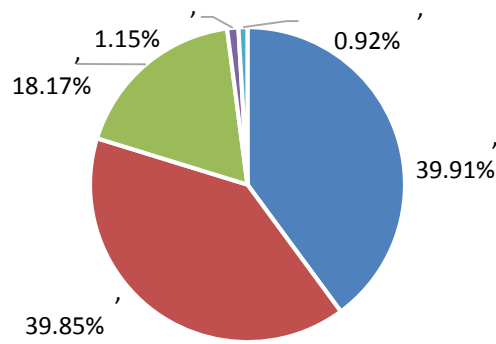
2017



42 2017

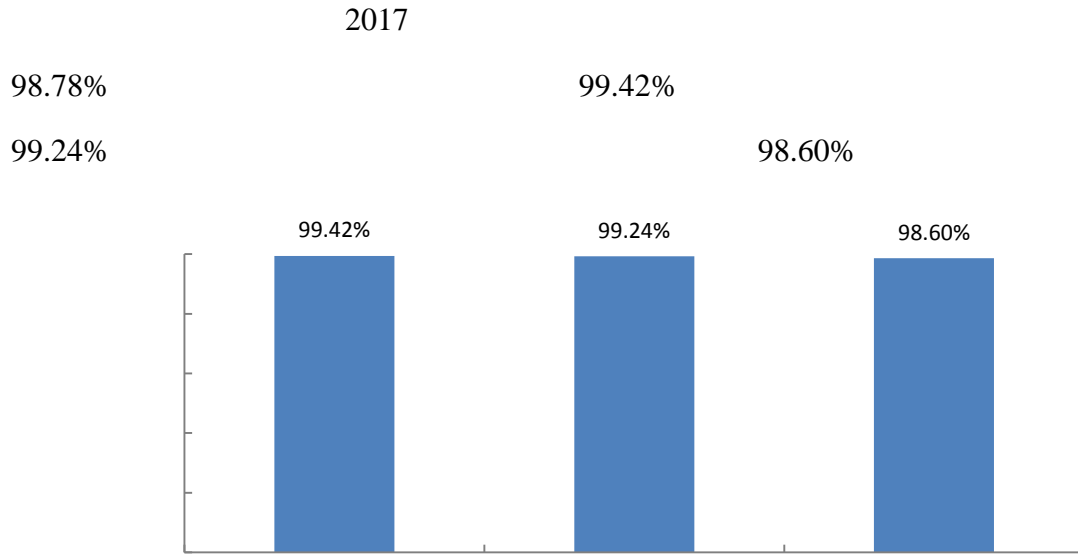
= + -2017 +

97.92%



43 2017

= + -2017 +



**44 2017**

$$= + -2017 +$$

**5.1.3**

45.76%

44.25%

**45**

$$-2017 \quad 10 \quad /$$

## 5.2

### 5.2.1

2017	26	90.00%	15
	96.25%		
30,@		100.00%	99.02%
		2	
90.00%			

È

### 5.2.2

13	9
----	---

### 5.2.3

## 5.3

### 5.3.1

98.00%

99.12%

99.42%

99.14%



46 2017

-2017

94.00%

98.75%

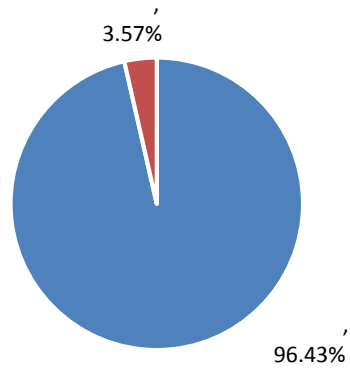


47 2017

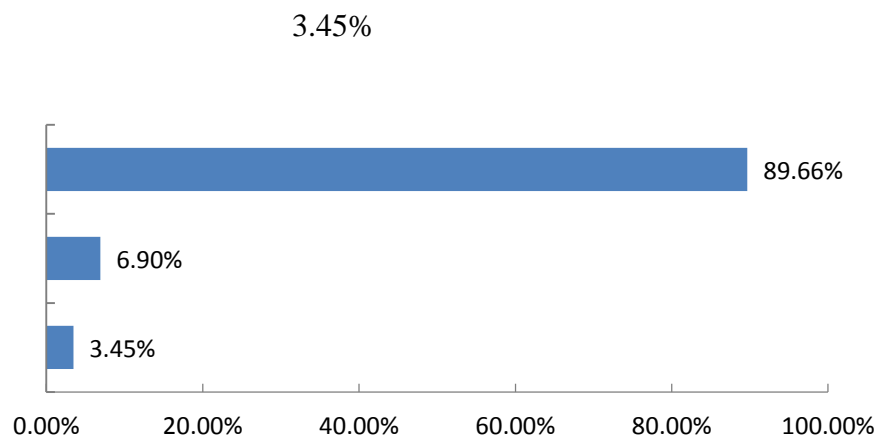
-2017

### 5.3.2

96.43%



**48**  
-2017



**49**  
100%  
-2017





长沙航空职业技术学院  
Changsha Aeronautical Vocational and Technical College